

LE
DIAMANT



TECHNICAL SPECIFICATIONS HYDRO-QUÉBEC AUDITORIUM

AUGUST 2025

GENERAL INFORMATION

Main Entrance and Box Office

966 Saint-Jean Street
Québec, Canada
G1R 1R5

Stage Door

785 Des Glacis Street
Québec, Canada
G1R 3R1

CONTACT

Telephone

Administration 418-692-0330
Box Office 418-692-5353

| | |
|------------------------------|---|
| Production Manager | Louise Roussel lroussel@lediamant.ca |
| Technical Director | Simon Cloutier scloutier@lediamant.ca |
| Production Assistant | Géraldine Rondeau grondeau@lediamant.ca |
| Assistant Technical Director | François Genest fgenest@lediamant.ca |

ARRIVAL AND SECURITY

Invited companies must review the emergency plan and safety rules of Le Diamant.

A controlled access system is in place in the theatre. A Diamant employee will explain the details once you arrive.

All workers must wear the adequate personal protection equipment (helmet, steel shoes and harness) in accordance with the safety measures.

Invited companies must declare all elements or activities that may require a special permit (pyrotechnics, armory or other). If needed, the companies may participate in the risk analysis to give context to the way these elements are used in the production.

TECHNICAL TEAM

All activities and equipment are under the supervision of the in-house technical team and the technical direction of Le Diamant.

All staff needed for technical work will be provided by Le Diamant, in accordance with the established agreement.

LOADING DOCK (see appendix 1)

961 Richelieu Street, Québec G1R 3R1.

All equipment must travel through a corridor connecting the loading dock to the main building in order to reach the freight elevator.

No object can exceed either one of these measurements

| | | |
|----------------|------|--------|
| Maximum height | 2,6m | 8'-10" |
| Maximum width | 1,5m | 5' |
| Maximum length | 9m | 30' |

DOOR A

Accessed by Richelieu Street, Level S2.

All equipment must travel through a smaller freight elevator between basements S2 and S1.

Dimensions of the lift between Levels S2 and S1

| | | |
|------------------|----------|-----------|
| Height | 2,4m | 8' |
| Width | 1,2m | 5'-9" |
| Length | 3,3m | 10'-8" |
| Maximum capacity | 1 588 kg | 3 500 lbs |

DOOR B

Loading dock with garage door giving access to level S1

| | | |
|----------------|------|-----|
| Height | 2,7m | 9' |
| Width | 2,4m | 8' |
| Height of dock | 1,3m | 51" |

This access is situated under the adjacent theater.

All truck maneuvers can block circulation on the street.

All deliveries must be coordinated at least 7 days prior.

MAIN FREIGHT ELEVATOR (see appendix 2)

For all equipment, the stage must be accessed by the main freight elevator. The opening of the elevator is level with the proscenium, on stage left.

| | | |
|------------------|------------|------------|
| Height | 2,7m | 9' |
| Width | 2,5m | 8'-5" |
| Length* | 6,7m | 21'-8" |
| Maximum capacity | 7,5 tonnes | 16 500 lbs |

***Longer stage elements may access the stage using the orchestra pit elevator.**

CONFIGURATION AND CAPACITY

PROSCENIUM CONFIGURATION (see appendix 3.1)

The proscenium configuration uses two sections of bleachers: One set of bleachers on the orchestra pit with a 15% incline and one set of retractable bleachers with a 42% incline for the main section.

It is possible to reduce the seating by using only the main bleachers to make space for either an orchestra pit or a small stage of a maximum height of 840mm (33 inches) by using the orchestra pit elevator.

SEATING CAPACITY

| | |
|------------------|-----------|
| Maximum capacity | 642 seats |
|------------------|-----------|

| Sections | Rows | Nb seats |
|-------------------------|---------|------------|
| Main Bleachers | A à P | 419 seats |
| Back bleacher (Balcony) | Q | 28 seats |
| Orchestra pit bleachers | AA à GG | 195 seats |
| Wheelchair spaces * | A ou Q | 4 (max 16) |

*One wheelchair space requires the space of 2 regular seats.

A sound booth is available in the middle of the last row (row Q), where approximately a dozen seats are removed.

BLACK BOX CONFIGURATION (voir appendix 3.2)

The stage and the front of house are on the same level, which is the ground floor of the building (same level as the main entrance on Saint-Jean street).

The front of house, without bleachers, can extend the stage space and transform into various configurations.

The capacity of the space must be analysed according to the set up plan of the event.

In any case, the capacity of the Black box configuration cannot exceed 905 persons, including all artists and staff.

DIMENSIONS AND INFORMATION (see appendix 4)

STAGE

Proscenium arch, steel, painted black

| | | |
|--------|--------|--------|
| Width | 17,4m | 57'-1" |
| Height | 10,34m | 34' |

Measurement from the zero point

| | | |
|--------------------------|--------|---------|
| Width of proscenium arch | 0,5m | 18" |
| Apron (downstage) | 1,5m | 59" |
| Upstage wall | 13,39m | 43'-11" |
| Last lineset | 12,57m | 40'-11" |

Measurement from the center line

| | | |
|---|--------|---------|
| Lateral lineset (automated) | 10,6m | 34'-9" |
| Fly gallery | 11,75m | 38'-7" |
| Stage Left Wall | 15,54m | 50'-11" |
| Stage Right Wall (counterweight rigging system) | 12,9m | 42'-4" |

Clearance

| | | |
|--------------------------|--------|---------|
| Under the fly system | 19,78m | 64'-11" |
| Under the grid | 20,7m | 67'-11" |
| Under the catwalks | 8,9m | 29'-2" |
| Downstage left backstage | 4,8m | 15'-9" |
| Upstage left backstage | 3,4m | 11'-2" |

Floor

Resilient wood stage with a Mondo type rubber with 3mm thickness

It is not permitted to screw into the floor.

| | | |
|---|-------|---------------|
| Weight capacity | 7 kPa | 150lbs/sq.ft. |
| Height of the stage from first row (AA) | 84cm | 33" |

ORCHESTRA PIT

The stage elevator, without rows AA to GG, can descend to create an orchestra pit for up to 50 or 60 musicians, depending on the instruments.

The orchestra pit is covered by a safety net.

The conductor's podium must be built with risers.

| | | |
|------------------------------|-------|--------|
| Width of the pit | 17,5m | 57'-4" |
| Width beneath the stage | 12m | 39' |
| Depth at pit level | 9,8m | 32' |
| Height between pit and stage | 3,16m | 10'-4" |

DIMENSIONS AND INFORMATION (continued)

FRONT OF HOUSE

Dimensions

| | | |
|------------------------------|-------|--------|
| Between lateral galleries | 18m | 59' |
| Width of the galleries (min) | 0,68m | 27" |
| Length | 23m | 75'-3" |

Clearance

| | | |
|-----------------------------|--------|-----|
| Under the grid | 10,36m | 34' |
| Under the hanging beams | 12,8m | 42' |
| Under the lateral galleries | 3,6m | 12' |

Floor

Resilient wood floor covered with hardwood flooring painted black.

It is not permitted to screw into the floor.

| | | |
|-----------------|-------|-----------|
| Weight capacity | 7 kPa | 150lbs/p2 |
|-----------------|-------|-----------|

TRAPS AND RIGGING ANCHORS

There are no traps beneath the floor.

Cable troughs are integrated in the resilient floor, where threaded anchors are evenly placed.

NB: These safe working loads are calculated with a static charge. If the anchor is used with a dynamic charge, a specific factor should be applied depending on the discipline, the weight of the acrobat and their equipment.

The factors applied need to be approved by the technical director of the theater.

- FRONT OF HOUSE: 10 anchors in the floor, evenly placed in the cables troughs on each side.

| | |
|-------------------------|-------------------------------|
| Safe working load (SWL) | 1800 lbs = 8kN All directions |
|-------------------------|-------------------------------|

- ORHCESTRA PIT: 6 anchors in the floor, evenly placed in the cables troughs on each side.

| | |
|-------------------------|-------------------------------|
| Safe working load (SWL) | 1800 lbs = 8kN All directions |
|-------------------------|-------------------------------|

- FRONT OF HOUSE WALLS: 16 vertical anchors, evenly placed on the acoustic walls on each side of the venue.

| | |
|-------------------------|-------------------------------|
| Safe working load (SWL) | 1800 lbs = 8kN All directions |
|-------------------------|-------------------------------|

- STAGE: 13 anchors in the floor, evenly placed in the cable troughs on each side and behind the stage.

| | |
|-------------------------|-------------------------------|
| Safe working load (SWL) | 1800 lbs = 8kN All directions |
|-------------------------|-------------------------------|

Possibility of using the Yoke 28-P204-021L swivel (4) type anchors **ON STAGE ONLY.**

| | |
|-------------------------|--------------------------------|
| Safe working load (SWL) | 5000 lbs = 26kN All directions |
|-------------------------|--------------------------------|

****NOTE THAT THE YOKE TYPE ANCHORS CANNOT BE USED ON THE ANCHORS ON THE ORCHESTRA PIT OR ON THE WALLS****

DIMENSIONS AND INFORMATION (continued)

BOOTHES

The booths are on the 3rd level, just over the entryways of the venue.

2 booths for follow spots, with a full pane of glass.

3 booths with sliding doors and a table with adjustable height.

Each booth is air conditioned and can hold a video projector inside.

HANGING

STAGE

Counterweight underhung rigging system

49 double battens, single purchase counterweight. Operated from stage right or the fly gallery if needed.

| | | |
|----------------------------|--------|----------|
| Capacity | 760 kg | 1672 lbs |
| Point load | 150 kg | 330 lbs |
| Length | 19,5m | 64' |
| Extension (30 units total) | 0,9m | 36" |
| Space between battens | 0,25m | 10" |
| Maximum Height | 19,78m | 64'-11" |
| Minimum Height | 1,2m | 4' |

2 upstage to downstage single speed automated double battens per side to close off each wing

Programmable height

| | | |
|----------------|---------|-----------|
| Capacity | 900 kg | 2 000 lbs |
| Point load | 150 kg | 330 lbs |
| Speed | 0,7 m/s | 20'/min |
| Length | 5,65m | 18'-6" |
| Maximum height | 18,28m | 60' |
| Minimum height | 1,2m | 4' |

Grid

The grid floor is available for the installation of any additional equipment.

A 1T motorised hoist is installed in an access well, stage right between batten 44 and 45.

| | | |
|--------------------------------|-------|------------|
| Height under the hanging beams | 23,5m | 77' |
| Distributed capacity | 15 T | 33 000 lbs |
| Maximum point load | 2 T | 4 400 lbs |

Lateral walls

A pin rail is positioned on the wall in both of the wings (stage right and left)

| | | |
|--------------------|--------|---------|
| Height of the rail | 3m | 10' |
| Maximum point load | 225 kg | 500 lbs |

Fly gallery

The fly gallery is on all three sides of the stage. A pin rail is available on stage right and stage left.

| | | |
|------------------------------|----------|------------|
| Height of the rail | 10,5m | 34'-3" |
| Maximum distributed capacity | 4 500 kg | 10 000 lbs |

HANGING (continued)

FRONT OF HOUSE (see appendix 5)

Front of house grid

The technical ceiling of the front of house is a grid, with the same specifications as the grid onstage.

The grid has 3 openings to hang lighting or other technical equipment. FOH 1 to 3.

The ceiling of the grid has 7 hanging beams that can accommodate hoists.

The grid floor is available for the installation of any additional equipment.

It is possible to hoist material up to the grid at FOH 2.

| | | |
|----------------------------|------|------------|
| Clearance on the grid | 2m | 78" |
| Total distributed capacity | 30 T | 70 000 lbs |
| Maximum point load | 2 T | 4 400 lbs |

Galleries and passageways

Projectors and other equipment can be hung within the arches on each gallery.

Threaded anchors are evenly placed on the galleries.

| | |
|-------------------|---------------------------|
| Fixation | 3/4"-10 UNC |
| Safe working load | 1800 lbs - All directions |

Booth wall

A hanging pipe is available behind Row Q.

RIGGING

HANGING STRUCTURE

| | |
|--|----|
| Lighting truss 12x12, black, 8 feet/ 2,4m (Arcofab TTD 1212-S) | 12 |
| Acrobatic truss 16x16, black, 10 feet/3m (TWD-1616-120S) | 6 |
| 6 way corner block 12x12, black (CEC-1212-690B) | 4 |
| Ligting flat-truss, black, 8 feet/ 2,4m (Arcofab TTD LA12-096S) | 12 |
| Lighting flat-truss, black, 4 feet/ 1,2m (Arcofab TTD LA12-048S) | 12 |

MOTORISED CHAIN HOISTS

Motorised chain hoists, single speed.

| | |
|------------------------------------|---|
| Hoist D8+, 500 kg | 4 |
| Hoist D8, 1000 kg | 4 |
| Control kit for hoist (4 channels) | 2 |
| Control kit for hoist (8 channels) | 1 |

SLINGS AND HARDWARE

The equipment and accessories necessary for rigging are available on demand.

Slings, shackles, Steelflex, beam clamps and beams.

DRAPERY (see appendix 6)

All of the curtains are made of black velvet.

| | Width | Height |
|---|-------------|---------------|
| 1x House curtain (black, 100% fullness) Opening (guillotine or traveller), maneuver at stage right, batten 3. | 20m (67') | 8,9m (29'-6") |
| 7x Borders (no fullness) | 19,5m (64') | 3m (10') |
| 1x Border (no fullness) | 18,2m (60') | 3m (10') |
| 8x Pairs of legs (no fullness) | 3,6m (12') | 8,9m (29'-6") |
| 1x Full stage black traveller (50% fullness) On rails, maneuver at stage right, batten 23. | 20m (67') | 8,9m (29'-6") |
| 1x Full stage black backdrop (no fullness) - upstage | 19,5m (64') | 8,9m (29'-6") |
| 4x Upstage to Downstage Black curtain (per side) On rails, under the fly gallery. | 3,3m (11') | 8,8m (29') |
| 1x Black scrim | 19,5m (64') | 8,9m (29'-6") |
| 1x Cyclorama , grey PVC | 19,5m (64') | 8,9m (29'-6") |

FRONT OF HOUSE ACOUSTIC TREATMENT

The gallery and passageway walls on each side are covered in 100% fullness black velvet.

ELECTRICAL

AVAILABLE CONNECTORS

Lighting

Upstage left:

| | |
|---------------------|-------|
| Camlock 3Ø 120/208V | 400 A |
|---------------------|-------|

Video

Upstage right:

| | |
|-----------------------------|-------|
| Cam lock 3Ø MALTI 120/208 V | 200 A |
|-----------------------------|-------|

Sound

Upstage right:

| | |
|-----------------------------|-------|
| Cam lock 3Ø MALTI 120/208 V | 200 A |
|-----------------------------|-------|

ELECTRICAL (continued)

Rigging

Technical ceiling, front of house:

| | |
|-------------------------------------|-------|
| Camlock 3Ø 120/208V | 200 A |
| Twist lock 3Ø 208V 50A (HBL-CS8369) | 4x |

Stage grid:

| | |
|-------------------------------------|----|
| Twist lock 3Ø 208V 50A (HBL-CS8369) | 2x |
|-------------------------------------|----|

Upstage left:

| | |
|------------------------|----|
| Twist lock 3Ø 208V 30A | 1x |
|------------------------|----|

Mobile

Output Voltage Converter 110/240V

| | |
|------------|---|
| 2000 watts | 7 |
| 800 watts | 1 |
| 750 watts | 1 |
| 500 watts | 1 |

CONNECTOR TYPES AND CAPACITY

Service, tools and utility

Type

| | | |
|----------|------|------|
| 120V 15A | Nema | 5-15 |
|----------|------|------|

Sound and video

Type

| | | |
|---------------------|---------|--------|
| 120V 15A, MALTI | Nema | 5-15 |
| 120/208V 30A, MALTI | Nema | L14-30 |
| Fixed power supply | CEE 32A | 1Ø 6h |

Lighting

Type

| | | |
|----------------------|----------|-------|
| Dimmable 120V 20A | Nema | L5-20 |
| 6 circuits, 120V 20A | SOCAPLEX | 4/19 |
| Fixed power supply | CEE 32A | 1Ø 6h |

Booths

| | | |
|---------------------|---------|--------|
| 120V 15A, MALTI | Nema | 5-15 |
| 120/208V 30A, MALTI | Nema | L14-30 |
| 208V 30A | CEE 32A | 1Ø 6h |

LIGHTING

PROTOCOLS

XLR-5 (DMX) connectors and Ether-Con can be used for lighting control.

The dimmers and house light controls are in the universe DMX-A

DMX, ACN and Artnet protocols can be used and distributed throughout the theatre.

| | |
|--------------------------------|----------------|
| 3 Concentrator / Converter | ETC RSN 4 out |
| 2 Opto-splitter (2x 5 sorties) | LumiSplit 2.10 |

LIGHTING (continued)

DIMMERS

All lighting circuits can be configured individually according to the use and charge (dimmer, relay or non-dim).

| | |
|----------|--------|
| Quantity | 332 |
| Tension | 120 V |
| Power | 2,4 kW |

CIRCUITS

Lighting circuits are distributed by SOCAPEX 4/19 multicables and Nema L5-20 plugs.

Circuit distribution:

| | |
|-------------------------------|----|
| Orchestra pit | 6 |
| Stage Left | 18 |
| Stage Right | 18 |
| Stage box, Stage left | 60 |
| Stage box, Stage right | 60 |
| Front of house, left | 10 |
| Front of house, right | 10 |
| Back of audience, booth level | 6 |

Circuits in house, FOH and bridges can be redistributed with multicables.

| | |
|-------------------|----|
| FOH left gallery | 24 |
| FOH right gallery | 24 |
| FOH 1 | 24 |
| FOH 2 | 24 |
| FOH 3 | 24 |

CONSOLE

MA Lighting system

GrandMA3 compact XT console

Remote control on digital tablet

PROJECTORS

Fresnel

| | |
|-----------------------|----|
| Robert Juliat 8'' 1Kw | 36 |
|-----------------------|----|

Par

| | |
|------------------------------|----|
| ETC 750W (+ various lenses) | 36 |
| ETC PARNeI 750W | 12 |
| Chauvet Colorado 2 Solo LED | 12 |

LIGHTING (continued)

Leko

| | |
|----------------------------|----|
| ETC S4 750W (body only) | 72 |
| 10 deg lens | 12 |
| 19 deg lens | 12 |
| 26 deg lens | 36 |
| 36 deg lens | 24 |
| 50 deg lens | 12 |
| ETC S4 Zoom 15/30 deg 750W | 18 |
| ETC S4 Zoom 25/50 deg 750W | 18 |
| Iris for S4 | 24 |
| Gobo holder type B for S4 | 36 |

Moving Light *

*Additional fees may be applied.

| | |
|------------------|----|
| Ayrton Khamsin S | 10 |
|------------------|----|

Cyclorama lights

| | |
|-------------------------|---|
| Elation SEVEN Batten 72 | 9 |
|-------------------------|---|

ACCESSORIES

| | |
|------------------------------|---|
| DMX Gateway, ETC RSN 4 ports | 1 |
|------------------------------|---|

Smoke machine

| | |
|--------------------|---|
| MDG Atmosphere DMX | 1 |
| DMX Ventilator | 1 |
| MDG Minimax DMX | 1 |

HANGING

| | |
|-------------------------------|----|
| Lighting ladders (Altman 264) | 4 |
| Floor base | 12 |
| Floor plate | 12 |
| 6ft/ 1,83m pipe | 6 |
| 8ft/ 2,44m pipe | 8 |
| 12ft/ 3,66m pipe | 4 |
| Side arm 12 inches/ 0,3m | 24 |
| Side arm 36 inches/ 0,91m | 6 |
| Sandbag (15 lbs/6,8 kg) | 24 |

CABLES

| | |
|-------------------------------|----|
| Y-connector (two-fer) | 36 |
| Socapex Splay - L5-20 | 20 |
| Socapex Splay - 5-15 | 2 |
| Adaptor CEE 32A 1Ø @ 2x L6-15 | 2 |

SOUND

MAIN SOUND SYSTEM

In its basic configuration, the sound system is made to offer a complete and surround sound in the proscenium stage configuration.

The speakers and amplification channels are distributed as follows :

| | | | |
|------------------------|-------------|-----------------------------------|----|
| Left, right | 4 channels | Line array D&B, 7 x 10AL per side | |
| Centre | 2 channels | Line array D&B, 7 x T10 | |
| Sub | 4 channels | D&B V-sub | 4 |
| Floor level | 2 channels | D&B E12D | 2 |
| Apron | 2 channels | D&B E5 | 6 |
| Surround | 12 channels | D&B E8 | 12 |
| Onstage effects | 2 channels | D&B E12 | 2 |
| Stage monitors | 2 channels | D&B M6 | 2 |

SIGNAL DISTRIBUTION

The digital processor manages the switch and signal control.

QSC510i

Available ins:

| | |
|------------------|-------------------|
| 32x | Dante |
| 6x (12 channels) | AES3 |
| 16 channels | AES3 (Cinéma)* |

*DCI configuration only

All speaker links are Speakon NL4.

CONSOLE AND CONTROL

Yamaha CL3

26 faders/ 8 bus/ 2 master

Maximum capacity: 64 mono + 8 stereo

Dante network

1 x Yamaha Rio 3224 D2 extension bay

Fixed in the AV room

*Adjustable table for in house position

Yamaha MG10XU

10 channels / 1 Stereo Bus / 1 AUX including FX

Maximum capacity: 4 mics, 10 line output (4 mono + 3 stereo)

SOUND (continued)

Mobile extension bay (patch box)

| | |
|----------------------------------|---|
| Yamaha Rio 3224 D2 extension bay | 1 |
| Yamaha Rio 1608 D2 extension bay | 1 |

CD players

| | |
|---------------|---|
| Denon DN-701C | 2 |
|---------------|---|

Reference monitor

| | |
|------------------|---|
| Neuwman KH 120AG | 2 |
|------------------|---|

MICROPHONES

Wired microphones

| | |
|------------------------|---|
| Shure, SM58 | 4 |
| Shure, SM57 | 6 |
| Shure, Beta52 | 1 |
| Shure, VP82 | 2 |
| AKG, C414 XLS | 2 |
| AKG, PCC-160 | 2 |
| Sennheiser, e965 | 2 |
| Sennheiser, e901 | 1 |
| Sennheiser, e902 | 1 |
| Sennheiser, e904 | 4 |
| Sennheiser, e906 | 2 |
| Sennheiser, e835-S | 3 |
| Audio-technica, ATM-35 | 4 |
| Rode, NT5-MP | 4 |
| Beyerdynamic M201 TG | 1 |

Wireless microphones

| | |
|--|---|
| 4 channel receiver, Lectrosonics VRM2WBL (fixed) | 1 |
| Wireless handheld microphone, Shure Beta 58A, Lectrosonics Hha | 4 |
| Belt transmitter (belt pack) Lectrosonics SSM | 6 |
| DPA 4066 Beige headset | 4 |
| Lavalier microphone DPA 4060, Beige | 6 |
| Sennheiser HSP4 Beige Headset | 6 |

Accessories

| | |
|-------------------------------------|----|
| Direct box, active and passive (DI) | 18 |
| Multiple adaptors | |

SOUND (continued)

Microphone stands

| | |
|---|----|
| Articulated microphone stand, black | 18 |
| Small articulated microphone stand, black | 8 |
| Articulated microphone stand on wheels, black | 4 |
| Table microphone stand, black | 4 |
| Straight microphone stand, round base, black | 6 |

CABLES

Speaker Speakon NL4, multiple lengths

Microphones

| | |
|--|---|
| XLR3, multiple lengths | |
| 12 channel snake, XLR-3 input to V37 | 3 |
| Veam37 to 12 male XLR-3 splay | 1 |
| Extension Veam37 length 7,5m/25 ft | 4 |
| Multicable 4 XLR3, length 30m/ 100 ft | 1 |
| Multicable 16 XLR3, length 15m/50 ft | 2 |
| Sub-Snake 12/4, XLR3, length 15m/50 ft | 1 |

VIDEO

SIGNAL DISTRIBUTION

Video connections are on level 3 near the booths

The signal may be distributed throughout the theatre, through the various wall plates

FORMAT, CABLES AND CONNECTORS

| | |
|-------------------------|---------------------------|
| 3GSDI | BNC |
| Cat6e Network | EtherCon |
| Single mode fiber optic | OpticalCon (LC Duplex) |

CONVERTERS

| | |
|----------------------------|---|
| Recorder/encoder, AJA Helo | 1 |
|----------------------------|---|

Video signal processing, ensemble AJA OG

| | |
|---|---|
| Signal booster SDI, 1 in / 4 out | 4 |
| SDI to HDMI Converter | 1 |
| HDMI to SDI (12G) Converter | 1 |
| SDI Converter/ Single Mode Fiber Optic | 1 |
| Encoder / decoder audio, 3G SDI, 8 channels | 1 |

MOBILE EQUIPMENT

Theatrixx XVV Converter

| | |
|------------|---|
| HDMI @ SDI | 2 |
| SDI @ HDMI | 2 |

PROJECTOR*

*Additional fees may be applied.

| | |
|--|---|
| Epson laser Pro L1755UNL WUXGA 3LCD, 15 000 lumens | 1 |
|--|---|

Lenses

| | |
|-----------------------------|--------------|
| Short throw (ELPLU03) | 0.48-0.57 :1 |
| Wide Throw (ELPLW05) | 0.77-1.07 :1 |
| Medium Throw (ELPLM15) | 1.8-2.35 :1 |
| Medium Throw (ELPLM10) | 2.42-3.71 :1 |
| Standard Zoom Lens (ELPL08) | 4.41-6.65 :1 |

Projection screen

| | |
|---|---|
| Draper focal point, front facing, black frame, 16'X9' | 1 |
|---|---|

CINEMA CONFIGURATION

Screen and legs:

Strong Vista retractable, Matte white, gain of 1

Black velvet legs

Projection format

| | | |
|---------------------|------------------------|------------------|
| Flat (standard DCI) | 38'-6"/11,73m length | 22'/6,7m height |
| Scope | 38'-6"/11,73m length | 17'/5,18m height |
| Projection distance | 82'9"/25m to the booth | |

*A 20K lumen projector is required to get the DCI standard @ 7.5 fc nominal.

The 7.1 audio configuration is calibrated according to the DCI standard.

The AES3 connection is through 2 CAT6e cables.

COMMUNICATION - PROGRAM SOUND AND VIDEO

CALL SYSTEM AND PAGING

The paging system covers the dressing rooms, the green room and the staircase leading to the stage.

Synchronised clocks are also in the green room, the backstage and the booth.

Video Return

| | |
|----------------------------|------------------|
| 1 Infrared camera | Marschall HD-SDI |
| 1 Remote controlled camera | Panasonic HD-SDI |
| 1 Infrared emitter | |

| | |
|----------------|---|
| Video monitors | Green room, Production office, On stage left and right, In the entrance of the theatre in the foyer |
|----------------|---|

COMMUNICATION - PROGRAM SOUND AND VIDEO (CONTINUED)

INTERCOM

Wired Intercom

ClearCom, HelixNet series

| | |
|------------------------------------|---|
| 2 channel beltacks, ClearCom BP-4x | 8 |
| Intercom headset, ClearCom CC400 | 8 |
| Table base, ClearCom HKB-2X | 1 |

Wireless Intercom

Riedel, digital 6 channels

| | |
|----------------------------------|----|
| Riedel BPK 1006 beltacks | 10 |
| Intercom headset, ClearCom CC300 | 10 |
| NSA-002 Interface | 1 |

Hollyland, Solidcom M1 Full-duplex wireless Intercom Solution

| | |
|----------------------|---|
| Station | 1 |
| Beltack | 8 |
| LEMO One ear headset | 8 |

EQUIPMENT AND TOOLS

RISERS

| | |
|--|-----------|
| Risers 4' x 4'/1,21m x 1,21m | 18 |
| Risers 4' x '8/1,21m x 2,44m | 28 |
| Riser 2' x 4'/0,61m x 1,21m | on demand |
| Handrails 4'/1,21m | 22 |
| Round legs of various heights (8"/20 cm, 16"/40 cm, 32"/81 cm, 48"/122 cm) | |
| Square legs of various heights (8"/20 cm, 16"/40 cm) | |
| Riser skirt, 8"H x 16ft L/0,20m x 4,87m | 1 |
| Riser skirt, 16"H x 32ft L/ 0,4m x 9,75m | 1 |

STAIRS

| | |
|--------------------------------|---|
| Mobile stage stairs (33"/84cm) | 2 |
| 8 inch steps | |

LADDERS

| | |
|------------------|---|
| 4'/1,22m ladder | 1 |
| 5'/1,50m ladder | 1 |
| 6'/1,83m ladder | 2 |
| 10'/3m ladder | 1 |
| 12'/3,66m ladder | 2 |

VERTICAL MAST LIFT

| | |
|---------------|---|
| Genie AWP 40s | 1 |
|---------------|---|

TOOLS

A set of tools is available for technical work.

COSTUME MAINTENANCE

A laundry room is available next to the green room, in the dressing room area.

The following equipment is available:

| |
|------------------------|
| 2 washers |
| 2 dryers |
| 1 steamer |
| 1 iron + ironing board |
| 1 worktable |
| 1 sewing machine |
| 2 mirrors on wheels |

DRESSING ROOMS (see appendix 7)

The dressing rooms are in the basement, beneath the stage. They include a green room, a production office, a laundry room and dressing rooms to accommodate 28 people.

A staircase leads to stage right.

There is no direct access between the dressing rooms and stage left.

A crossover must be planned upstage for any crossing between stage right and left.

The orchestra pit is also accessible through the green room.

Dressing room A

For 1 person, or makeup, with private toilet and shower.

Dressing room B

For 2 people

Dressing room C (accessible)

For 2 people

Dressing room D

For 4 people.

Dressing room E

For 4 people.

Dressing room F

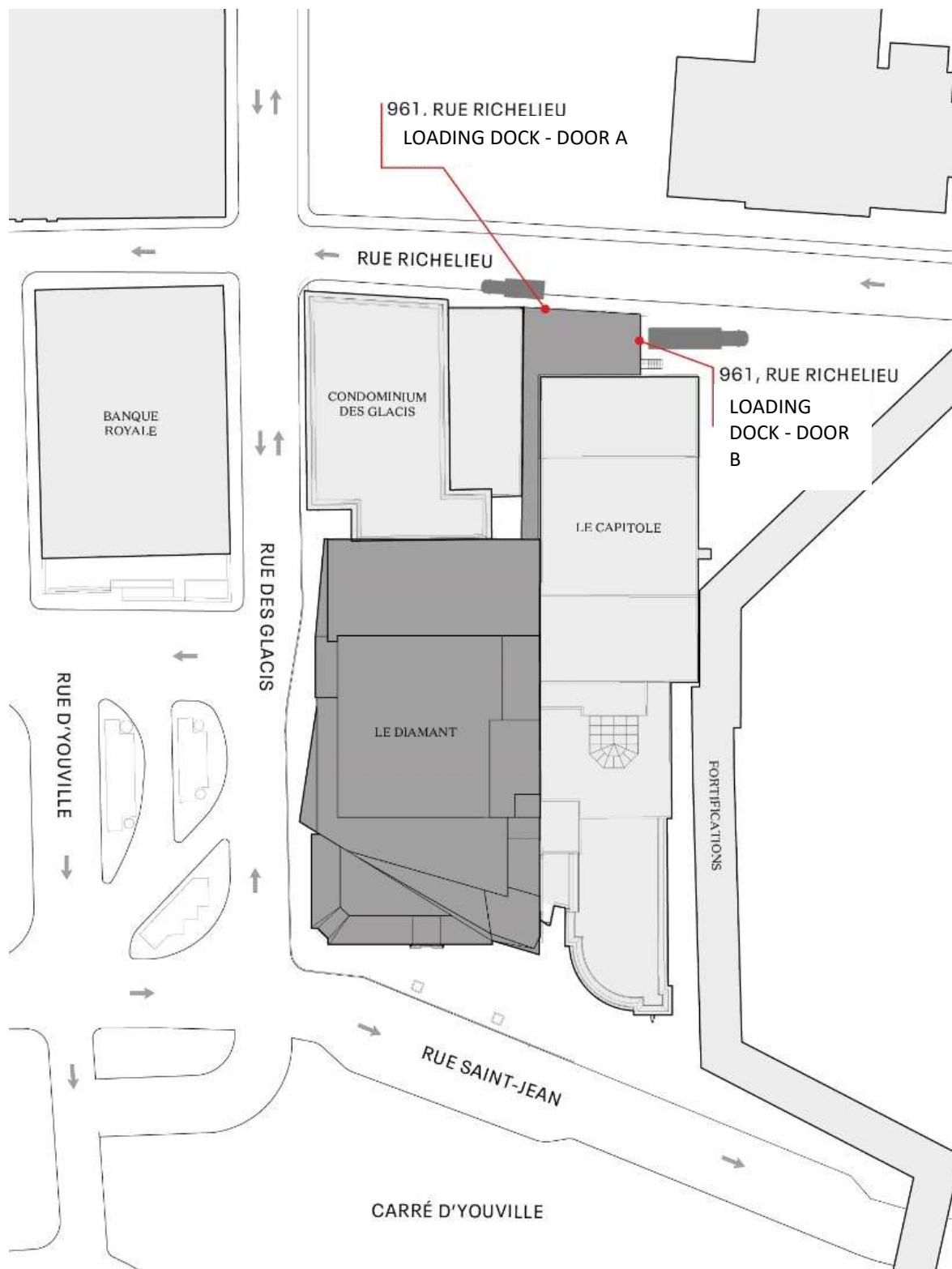
For 5 or 8 people

Dressing room G

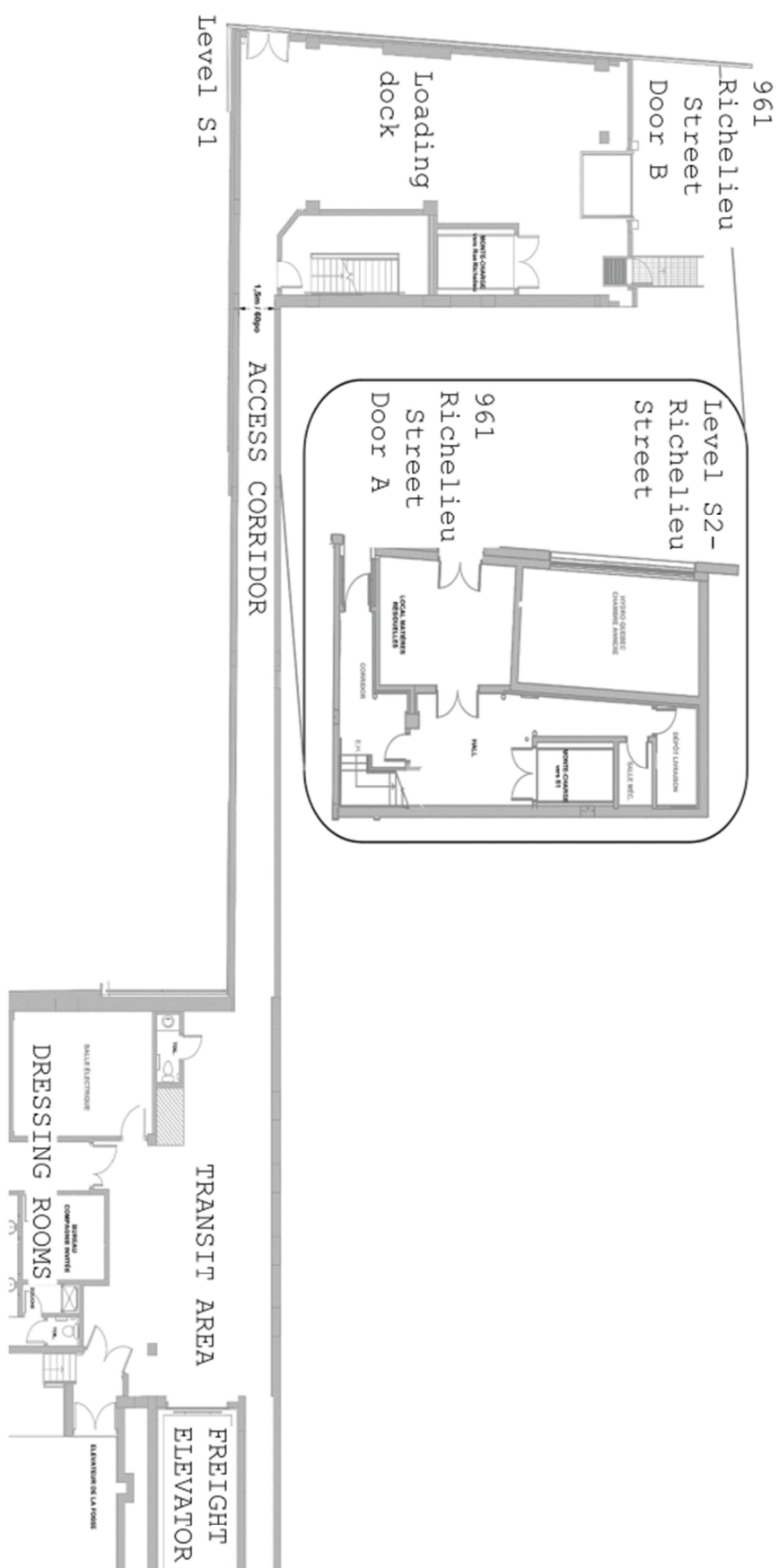
For 4 or 7 people with toilet and shower.

A door can be opened between Dressing rooms F and G to create one larger dressing room.

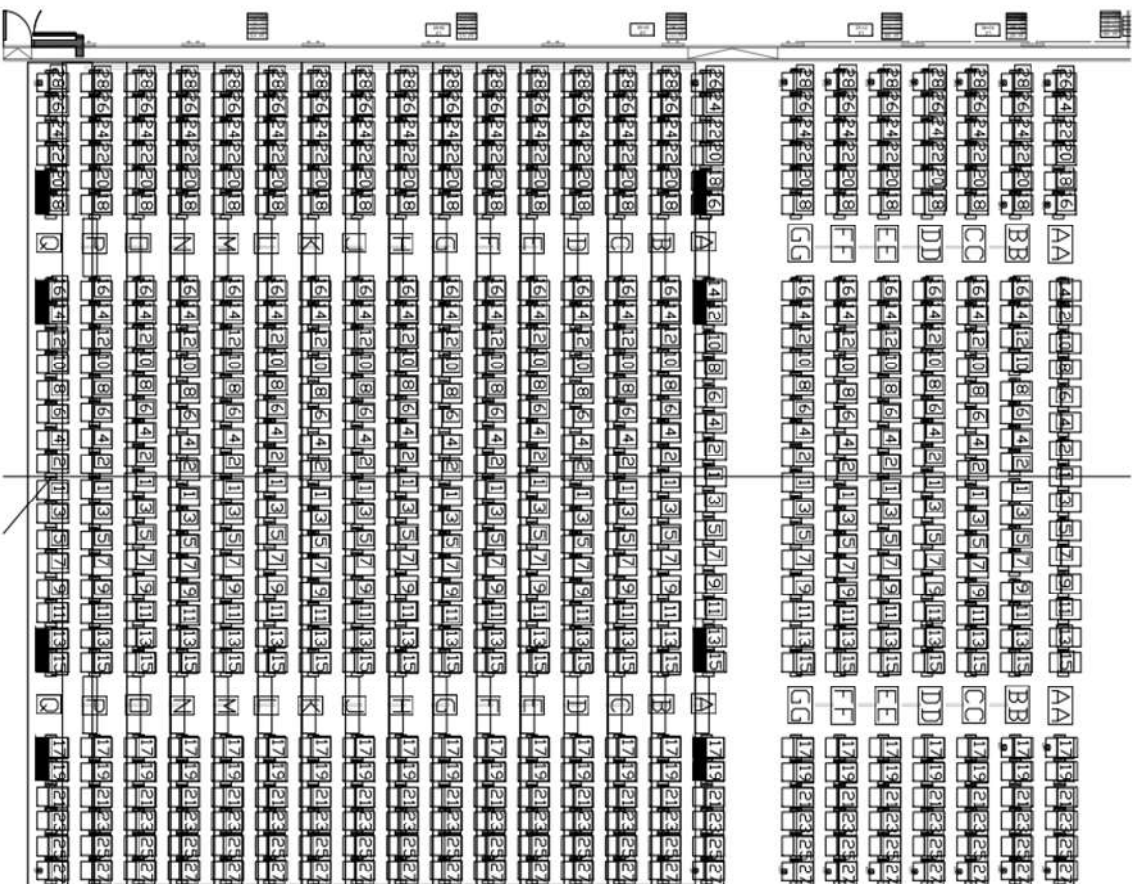
APPENDIX 1: Loading dock plan



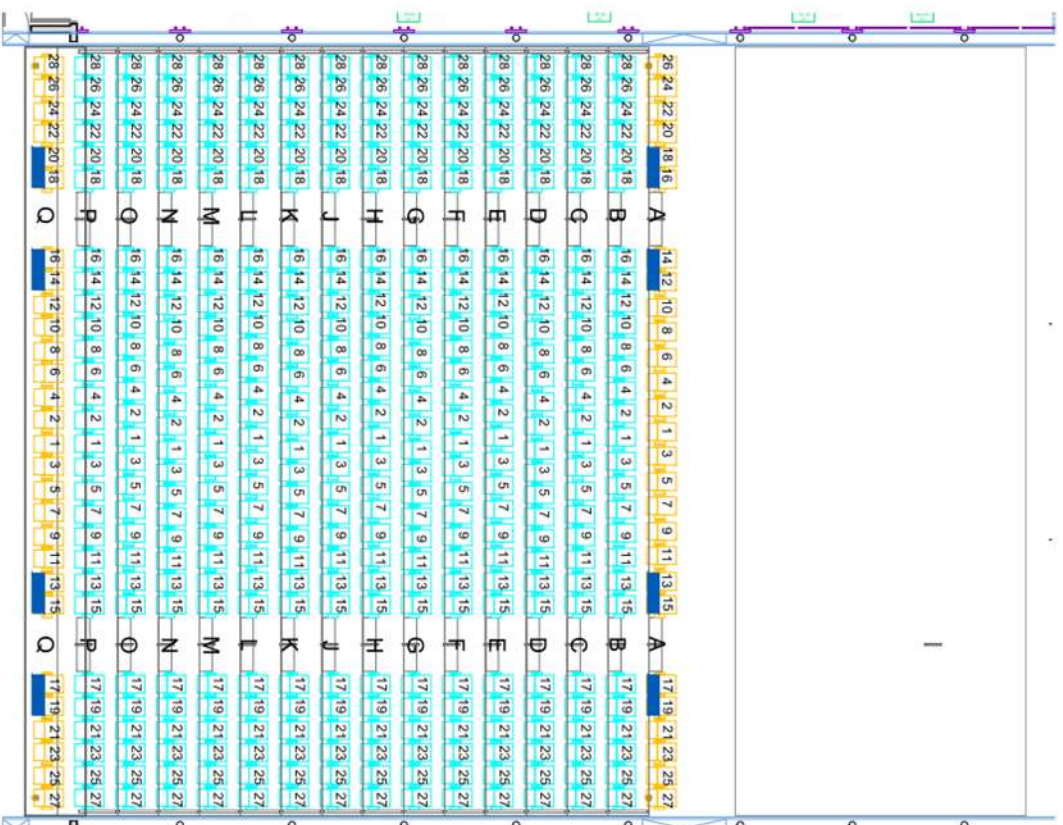
Page 20 de 26



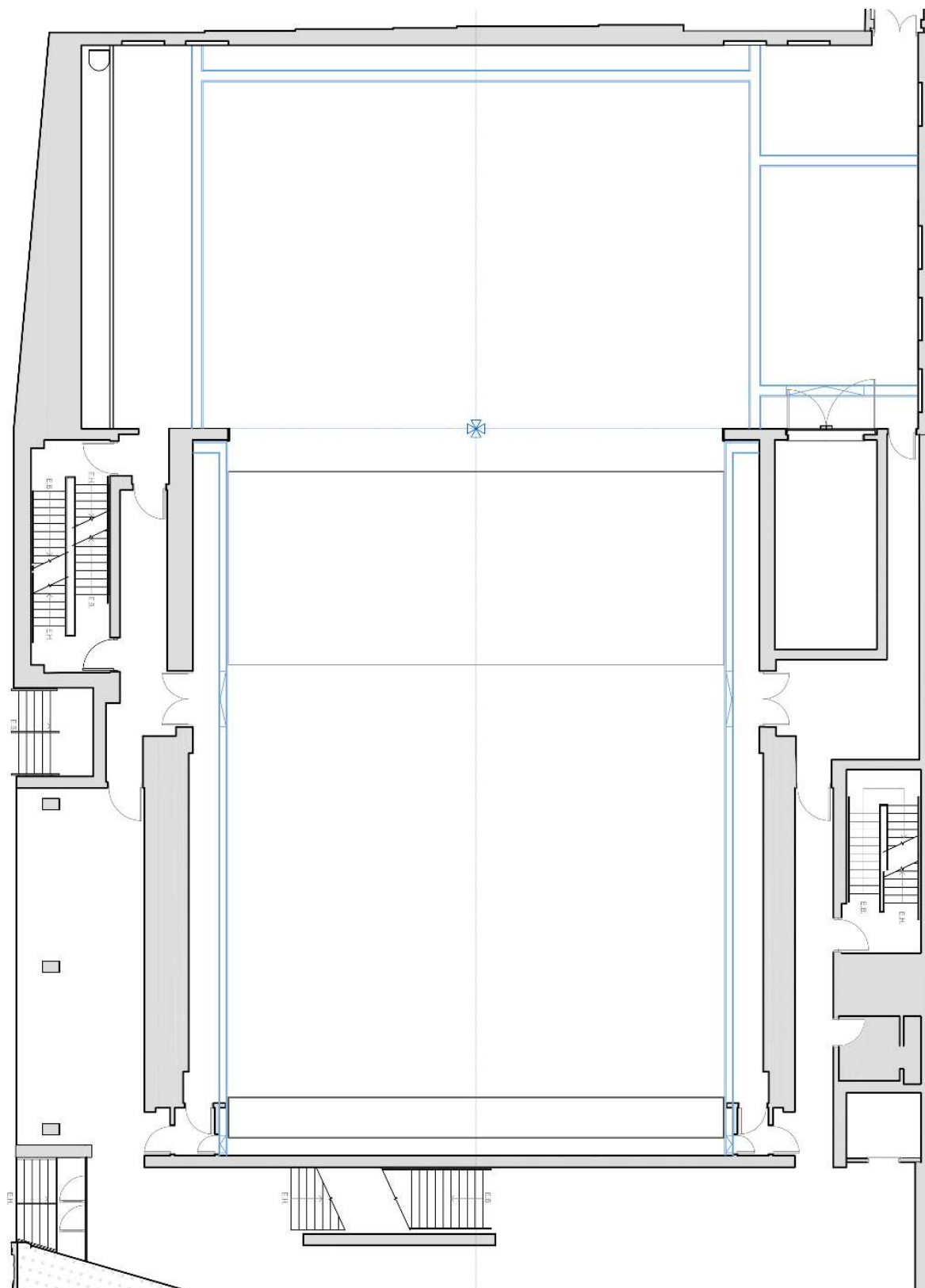
APPENDIX 3.1: Seating plan (Large proscenium stage)



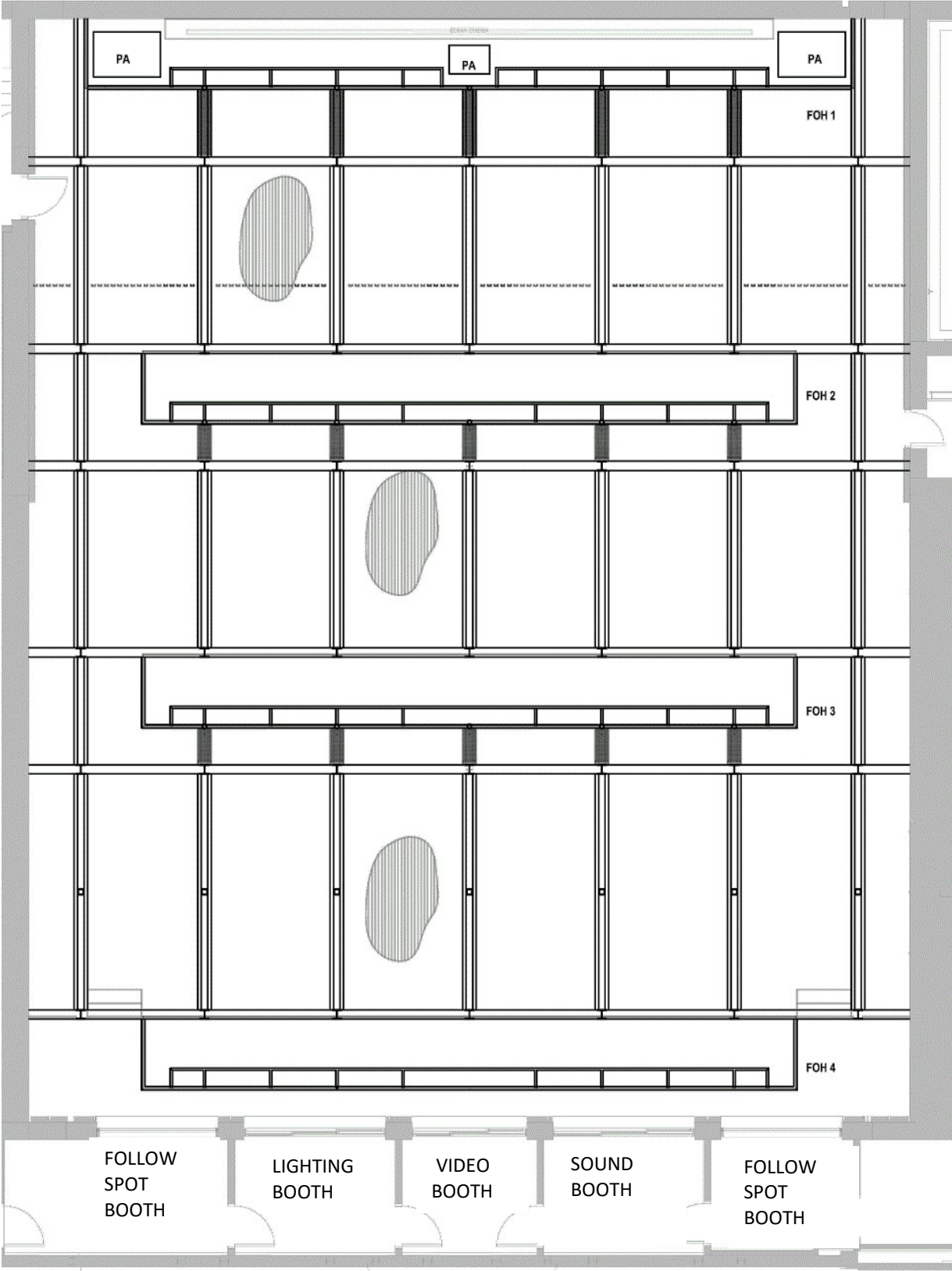
APPENDIX 3.2: Seating Plan (Small proscenium with stage or orchestra pit)



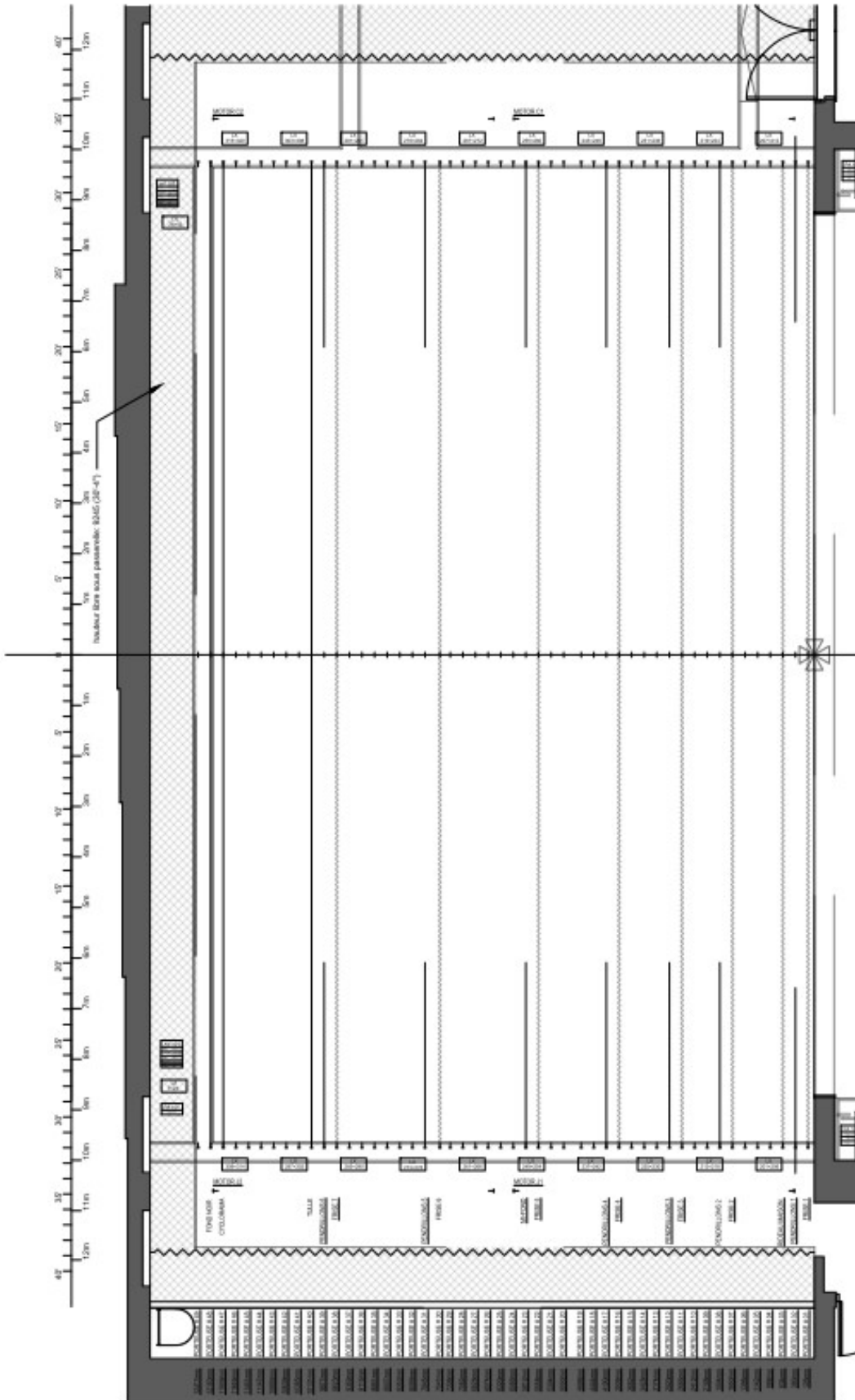
APPENDIX 4: Floor plan of stage and front of house, without bleachers



APPENDIX 5: Front of house grid plan



APPENDIX 6: House masking plot



APPENDIX 6 (continued): Fly schedule

| Dist. | Nom | Poids | | Trim | Description | Notes |
|-------------|-----------|-------|--|------|----------------|-----------|
| 52'05" | FOH 3 | | | | | |
| 29'10" | FOH 2 | | | | | |
| 5'01" | FOH 1 | | | | | |
| | SOUND | | | | Full house kit | |
| | Screen | | | | | |
| | | | | | | |
| 0'05" | Batten 1 | | | | Border | With Pipe |
| 1'03" | Batten 2 | | | | Legs | |
| 2'01" | Batten 3 | | | | House Curtain | |
| 2'11" | Batten 4 | | | | | |
| 3'09" | Batten 5 | | | | | |
| 4'07" | Batten 6 | | | | | |
| 5'05" | Batten 7 | | | | Border | |
| 6'03" | Batten 8 | | | | Legs | |
| 7'01" | Batten 9 | | | | | |
| 7'11" | Batten 10 | | | | | |
| 8'09" | Batten 11 | | | | Border | |
| 9'07" | Batten 12 | | | | Legs | |
| 10'05" | Batten 13 | | | | | |
| 11'03" | Batten 14 | | | | | |
| 12'01" | Batten 15 | | | | | |
| 12'11" | Batten 16 | | | | Border | |
| 13'09" | Batten 17 | | | | Legs | |
| 14'07" | Batten 18 | | | | | |
| 15'05" | Batten 19 | | | | | |
| 16'07" | Batten 20 | | | | | |
| 17'01" | Batten 21 | | | | | |
| 17'05" | Batten 22 | | | | Border | |
| 19'01" | Batten 23 | | | | Traveller | |
| 19'11" | Batten 24 | | | | | |
| 20'09" | Batten 25 | | | | | |
| 21'07" | Batten 26 | | | | | |
| 22'05" | Batten 27 | | | | | |
| 23'03" | Batten 28 | | | | | |
| 24'01" | Batten 29 | | | | | |
| 24'09" | Batten 30 | | | | Border | |
| 25'09" | Batten 31 | | | | Legs | |
| 26'07" | Batten 32 | | | | | |
| 27'05" | Batten 33 | | | | | |
| 28'03" | Batten 34 | | | | | |
| 29'01" | Batten 35 | | | | | |
| 29'11" | Batten 36 | | | | | |
| 30'09" | Batten 37 | | | | | |
| 31'07" | Batten 38 | | | | Border | |
| 32'05" | Batten 39 | | | | Legs | |
| 33'03" | Batten 40 | | | | Tulle | |
| 34'01" | Batten 41 | | | | | |
| 34'11" | Batten 42 | | | | | |
| 35'09" | Batten 43 | | | | | |
| 36'07" | Batten 44 | | | | | |
| 37'05" | Batten 45 | | | | | |
| 38'03" | Batten 46 | | | | | |
| 39'01" | Batten 47 | | | | Grey PVC Cyc | |
| 39'11" | Batten 48 | | | | Backdrop 60' | |
| 40'09" | Batten 49 | | | | | |
| Stage Right | Downstage | | | | | |
| | Upstage | | | | | |
| | Lateral | | | | | |
| Stage Left | Downstage | | | | | |
| | Upstage | | | | | |
| | Lateral | | | | | |

APPENDIX 7: Dressing room plan, Level S1

